



CKFA
Capla Kesting Fine Art

Capla Kesting Fine Art
121 Roebling Street - Brooklyn, NY 11211
<http://caplakesting.com> tel: 917-650-3760



Chicago 2007
Britney and Friends
April 26 - 30, 2007
Capla Kesting Fine Art

Capla Kesting Fine Art
121 Roebling Street Brooklyn NY 11211
tel: 917-650-3760
<http://www.caplakeesting.com>

Since 2003 Capla Kesting Fine Art has served the conscientious art community of Brooklyn and greater New York. CKFA has developed a reputation for exposing the latest avant-garde figurative illustration, painting and sculpture. With an expanded vision which includes touring art exhibitions, CKFA seeks to bring the Williamsburg art aesthetic to the larger contemporary discourse.

Boasting an average of 10 shows a year; Capla Kesting Fine Art has established itself as a true source of fine art with a sharp edge. It is not solely in the amount of work exhibited, but annually CKFA donates work to WAGMAG, a local not for profit publication, to help support independence and unity among the Brooklyn arts collective.

Featured Artists:

Lincoln Capla, Daniel Edwards, Steve Ellis, Jonny Fenix, Jason Douglas Griffin, Chris Gwyn, Martina Kubinyi, Brian Leo, Travis Lindquist, Miguel Parades, Marcus Poston, Dave Tree & Kevin Willis

"We're not here making a statement. We're just showing art we think deserves to be shown. The goal and whole idea of the place is to help bring artists that we respect and enjoy to the attention of the public."



Lincoln Capla 1969-2006

Kevin Willis
Group Shows 2007

Paragraph about me:

I received a degree in Anthropology from Western Washington University. I Have traveled the world and Africa is my passion and inspiration. I don't know why I have been painting and photographing my entire adult life. I have been producing and animating music video's for the band Tool, for the last 15 years. I don't take anything for granted.



A)



B)



C)

A) Murder Monkeys, Oil on Canvas, 2007

B) Mugabe, Oil on Canvas, 2006

C) El Caballo, Oil on Canvas, 2006

Martina Kubinyi
Group Shows 2007



B)

All my new pieces are more illustrative with narratives about my life, my life growing up and dealing with its curves in New York, and about New York, because these paintings are being shown in Chicago, so its me being proud and giving the viewer a New York narrative, my narrative.



C)



A)

- A) Junky, Mixed Media on Wood, 11" x 14" 2007
- B) Dedicated to the Youth Seed, Mixed Media on Wood, 11" x 14" 2007
- C) Suffer Today for a Better Tomorrow, Mixed Media on Wood, 11" x 14" 2007

Brian Leo

Solo Exhibition November 2007

In what he refers to as a “garbage parade” of small paintings, artist Brian Leo addresses culture, politics and American identity. The parade, a cavalcade of tiny images exhibited en masse, show events of deep cultural significance flanked by bizarre meditations on moments of Leo’s personal experience. Each tiny piece, in turn, contradicts itself; episodes rank with chaos and suffering explode off the canvas in bubblegum garage-pop tones.

Working within the language of present-day visual culture, where talent show winners are as recognizable and evenly glossed as the latest war atrocities; Leo creates a tangible and overwhelming visual conversation, accurately presenting the warped and whimsical bombardment that is contemporary American life.

Somewhere between Osama Bin Santa Claus and Angelina Jolie’s disembodied lips, Leo, unravels and reconstructs the experience of living as a first generation American, of Korean and Italian heritage, at the forefront of the 21st century. He draws upon this background for inspiration in his work, recently manifesting itself as a series of paintings which depict the North Korean dictator and murderer of Leo’s patriarch, Kim Jong Il.



A)

A) video game meat, 8"x6", 1999



B)

B) Ralphie (from an x-mas story,) 8"x6" 2006

Jason Douglas Griffin
Solo Exhibition August 2007



A)

In a salon style group show such as this, artists jockey for the "best" space on cluttered walls. It's not much different from companies fighting for prime time ads on television, or shelling out big bucks for billboards in Time Square.

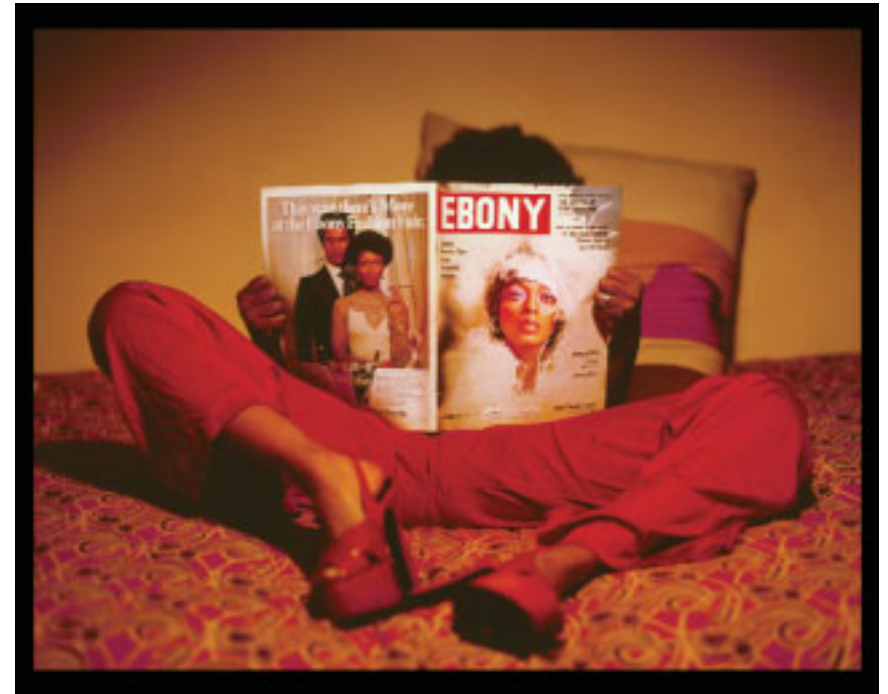
Congested cities become gallery blueprints.

Ever see Prada in the projects? Ever see a Picasso hung by the floor?

Everything, everything, everything has a price.

A) Debonair Cleaners - 10% Off, MixedMedia on Found Object, 2007

Chris Gwyn
Group Shows 2007



A)

Education

2000 B.J. in Photojournalism: University of Missouri
School of Journalism, Columbia, MO

Selected Solo Exhibitions

2005 Movement: Introspection, CKFA, Brooklyn, NY
2000 Japan: Rebirth, Ardentia Gallery, Columbia, MO

Selected Group Exhibitions

2007 Black & White, Faufitown Projects, Los Angeles
Bridge Chicago Art Fair, CKFA, New York
Fountain Chicago Art Fair, CKFA, New York
Fountain New York Art Fair, CKFA, New York
Fountain Miami Art Fair, CKFA, New York
2006 Preview, CKFA, New York
Fountain New York Art Fair, CKFA, New York

A) Kemba That Girl Who Wears Big Ass Earrings 002, C Print, 2007

Dave Tree
Solo Exhibition October 2007

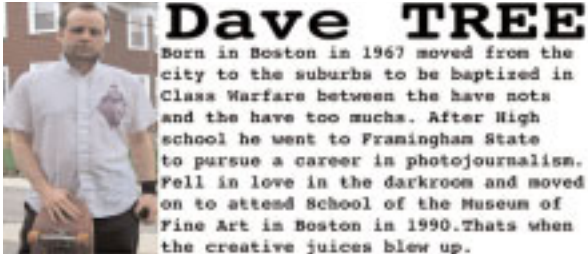


A)

A) Money Tree Blossoms, Mixed Media on Wood, 2007

B) I Know How to Hurt, Mixed Media on Wood, 2007

C) Money Cherry, Mixed Media on Wood, 2007



Dave TREE

Born in Boston in 1967 moved from the city to the suburbs to be baptized in Class Warfare between the have nots and the have too muchs. After High school he went to Framingham State to pursue a career in photojournalism. Fell in love in the darkroom and moved on to attend School of the Museum of Fine Art in Boston. That's when the creative juices blew up.

Moving on from photography to photo found object sculpture Dave made great use of all the resources provided by the school and learned to move in many mediums. After graduating he pursued a career in music with his highly successful band TREE while at the same time showing art in galleries all over Massachusetts. In 2004 he created a political/satire series called "the Critical i" which ran weekly in the Boston Phoenix. He was also a dj for WBCH 104.1 in Boston before leaving to pursue music once again with his new band SUPERPOWER. He has appeared personally and through music in a number of Independent films such as "Floating" "Black and Chrome" and his music has been played on a few TV shows such as "The Shield" "Real World" and played live in a Rosie O'Donnell skit. Dave TREE is committed to create art in any and all mediums specializing in Photo, Silkscreen, music, found object sculpture and propaganda. He finds inspiration every day and hopes that his art will inspire others to create art and to enjoy art as a true force of Nature.



B)



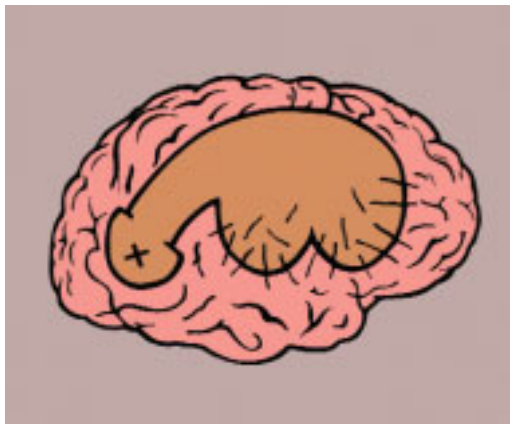
C)

Jonny Fenix
Solo Exhibition June 2007

I was born Jon Smith in Nacogdoches Texas in 1973.
I live in Los Angles and want little. Need less.
I have a daughter, named Brave, new to me and my wife.
We walk on skid row where we live to find, breathe and see the future
coming quick to this Americant.
Mustaches' and Butterflies. Whispers on leaves.
This sea's not full of fish but trash.
Furniture, canvas or letters to friends, they are the same loaded.
Hollywood you think spraypaint and tape are clever!
I'll silkscreen in blood and motor oil, get ready.
I walk your bleeding blahblah streets laughing and crying.
Big tits, sunglasses and small dogs.
We are at war, me and you (this is bigger than this.)
I have shown and am showing. Cut open and screaming.
Look or don't, (I wish they'd see.)
Stand in Line.



B)



C)



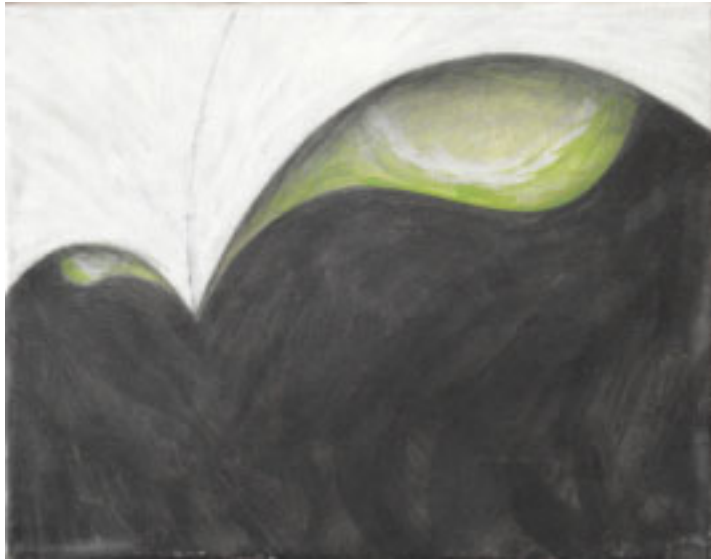
A)

A) there was gold in their ears, Mixed Media on Wood, 2007

B) a note to ray thurston (a slave owner,) Mixed Media on Wood, 2007

C) some of the time artist's paint themselves, Mixed Media on Wood, 2007

Lincoln Capla
Solo Exhibition April 2007



A)

At his death in 2006, Lincoln Capla left behind a legacy of over 2000 paintings and works on paper. His life, hastened by cancer, was exemplified by his work, in a minimalist style, subtracting color and form from his artwork to achieve, "the clearest sense and truest form of expression"

His April installation, American Painting 2000 – 2006 is the first posthumous exhibition and largest scale retrospective of his work. Isolating only works produced in this century, we are able to find focus on themes Lincoln sought to express in his artwork during the final phase of his career.

A) Untitled Menace, Oil on Canvas, 8" x 10", 2003

Daniel Edwards
Solo Exhibition May 2007



A)

"An obvious comment on celebrity and the pro-life movement in general."
Sean Michaels - Wired

"Britney Spears's signature bare midriff and provocative poses may come to be considered relatively demure when compared to a new life size sculpture of the pop star soon to be displayed in Brooklyn."
Russell Berman - The New York Sun

"A Clay Britney Stars in the Abortion Debate" Colin Moynihan - The New York Times

"Britney Spears as art--political art, no less" Cheryl Bowles - The Chicago Tribune -

"For the first time since perhaps forever, Britney Spears is being taken seriously" Joal Ryan - E! online

"Apparently, his life-size nude statue of Spears -- on all fours, clutching a bearskin rug and complete with a posterior view that reveals the crowning of her baby's lil' head -- was the right choice for a New York gallery."
The Courier- Journal - Louisville Kentucky

A) Monument to Pro-Life: The Birth of Sean Preston, Resin Cast, Life Slze, 2006

Steve Ellis

Solo Exhibition June 2007

Steve Ellis is a long time East Village / Lower East Side, New York artist. Steve's work spans the globe of cultural symbolism in a dynamic and bold realistic painting style. By blending his own personal experiences and popular culture, Steve takes a dada approach to subverting pop iconography. The "Disposable Lighter Series", all 6' x 2' oil paintings of butane lighters wrapped in various sticker packaging, are fire breathing idols of a disposable culture. Inspired by a personal experience in a car accident the "Crashed Car Series" depict cars in various states of post accident condition. The paintings are subversive evidence to survival stories and symbols of a lifestyle ethic. Other series include broken heels, knives, tv sets, and a variety of storytelling objects he fetishizes in oil paint.

Ellis has appeared in galleries in near every corner of New York including American Fine Arts, Brooklyn Front, Clampart, Clayton's Outlaw Art Gallery, CBGB's Gallery, Basement A.I.R.E.. He has been curated by Gracie Mansion, Anne Ellegood, and Colin de Land and has work in the collections of Harvard Art Appreciation Group, Elton John, Mistress Formika and many others. He is currently teaching painting at the School of Visual Arts.

Upcoming shows: CKFA booth at Bridge Contemporary Art Fair, Chicago, April 27, 2007; CKFA June 1st, with Jonny Fenix, Brooklyn, NY



A)

B)

A) Telsa Ray Disposable Lighter, Oil on Wood, 6"x 4" 2006

B) Hamburger Hummer Boxing Gloves, Oil on Found Object, Life Size, 2007

C) Crashed Green Gremlin, Oil on Canvas, 13" x 24" 2007

Travis Lindquist Solo Exhibition September 2007

Travis Lindquist was born in 1969 in Boston Mass. Growing up on Cape Cod he was washed in all the myths and contradictions of suburban life. After graduating high school, he went to the School of the Museum of Fine Arts and Tufts University in Boston. This is when he committed himself to the life of an artist. Lindquist is primarily a painter, but has branched out into other mediums including sculpture, video, photography, sound, and digital animation. He spent ten years in Boston, showing in many of the venues there including the ICA, the Harbor Gallery at UMASS, the Museum of Urban Art and Culture, and the Boston Architecture Center.

In 1997 he moved to Austin TX. He worked as one of the animators on Richard Linklater's movie *Waking Life* as well as doing a number of showcases with the Austin Museum of Digital Art. He also still actively pursued his painting, showing at the Texas Fine Arts Association, Conduit Gallery in Dallas, and the Four Seasons Hotel in Austin.

He moved to NYC in 2002, where he reunited with David Hochbaum and Colin Burns, giving birth to the GMSH. There have been numerous influences on Lindquist's work including the German Expressionists, Neo-Expressionism, Ben Shahn, Max Beckman, Basquiat, Bill Viola, C Bukowski, D Copeland, H Korin, but most importantly is his peers. Collaborations have always been a part of his creative process, finding inspiration in the sharing of ideas and approaches to the act of creation.



A)

A) Bob Ford Four Eyes, Mixed Media on Wood, 36" x 24" 2007

B) Albert Fish, Mixed Media on Wood, 24" x 24" 2007

C) Aspertame, Mixed Media on Wood, 26" x 24" 2007



B)



C)